

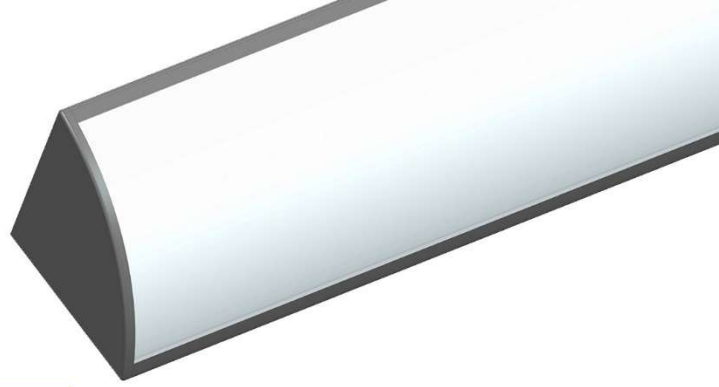
# *The Angolo Series*



*...Taking you forward*

PACKAGED LIGHTING SOLUTIONS





# Linear Corner Unit

## Indicative Performance Overview

### Features

- Mounting - Surface mount, rear cable entry point - End cable entry point TBC
- Distribution - General purpose output suitable for most applications
- Performance - High efficacy, reduced power requirements, & lowered running temperatures
- Environmental - IP20/IK06 ingress & impact ratings
- Accreditations - CE & RoHS international product marks

### Typical Applications

- Schools & universities
- Hospitals & care homes
- Government buildings

### Technical Details

Nominal Power / Class	20W, 5ft.
LED Details / Type	Samsung 72PCS, SMD2835
Lumen Maintenance	L70 >50,000 Hours, TM-21 @ 25°C
Nominal Efficacy	>120m/W
Nominal Lumen Output	2,400lm
Colour Temperature	3000K, 4000K, 5000K
Colour Rendering Index	>80Ra
SCDM	<4
Beam Angle	120°
PSU Details / Type	Tridonic
PSU Protocols	Standard, DALI
Input	220-240VAC
Frequency	50-60Hz
Power Factor	>0.9,
Total Harmonic Distortion	<15%
Ingress Rating	IP20
IK Rating	IK06
Operational Temperature	-30° to 40°C
Storage Temperature	-40° to 60°C
Operational Humidity	15% to 90% RH
Dimensions (L x W x H)	1200 x 95 x 95mm
Weight	4.0KG
Unit Primary Material(s)	Aluminium
Finish	Painted White (Custom, Subject MOQ)
Mounting Option(s)	Surface Mount
Cable Length	N/A (Internal Terminal Block)
Optional Feature(s)	TBC
Warranty	5 Years (UK-Only)