

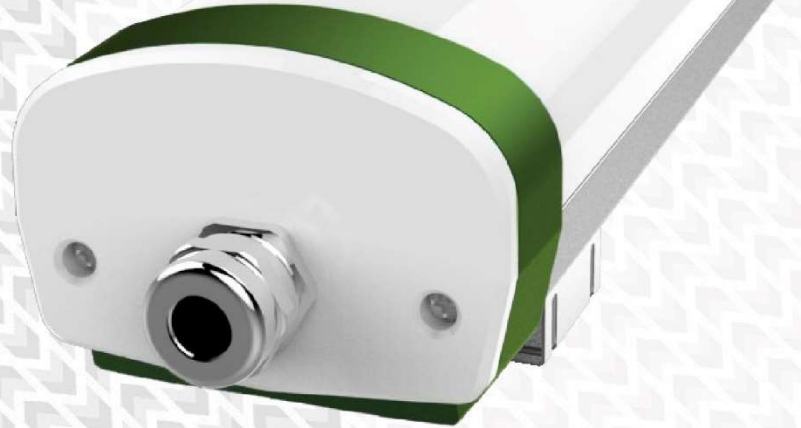
The Duro Series



...Taking you forward



- High output, utility aluminium linear fittings for application in commercial & industrial areas
- Performance driven design - family efficacy of 139 lm/W, IP65 & IK08
- A highly cost effective commercial & industrial solution
- CE & RoHS international product marks
- The most competitive, high-end solution for projects worldwide

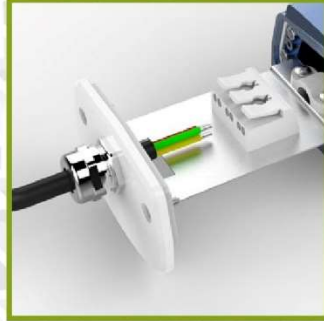


Utility Aluminium Linear Fitting



Mounting Brackets x2

Stainless Steel c/w tightening bolt - screws & raw plug set included



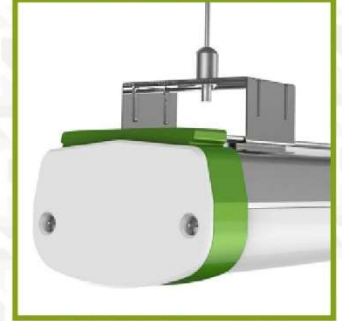
Quick Connectors + IP65

Easy access to terminal blocks ensure fast and flexible installation whilst maintaining IP65 rating



Optional Diffusers

Frosted, clear or striped diffusers are available



Accent Ring

Custom-colour & laser-etching personalisation available, subject to MOQ



Series Mounting Modifications

Dual end terminal blocks. Max. 12no. fittings per daisy-chain



Optional Cable Suspension

Twin 1500mm stainless steel suspension cable kits are available



Nominal Power / Product Class	25W, 5ft. / Custom	36W, 5ft. / Custom	50W, 5ft. / Custom
Nominal Efficacy	140lm/W	140lm/W	136lm/W
Nominal Output	3500lm	5040lm	6800lm
Light Engine & Model	SMD2835	SMD2835	SMD2835
Lumen Maintenance (TM21)	L70 ≥ 50,000Hrs	L70 ≥ 50,000Hrs	L70 ≥ 50,000Hrs
LM79 Test Conditions (Abrid.)	Maintained 25°C	Maintained 25°C	Maintained 25°C
CCT	3000K, 4000K, <u>5000K</u> , 6000K	3000K, 4000K, <u>5000K</u> , 6000K	3000K, 4000K, <u>5000K</u> , 6000K
CRI	≥80Ra, ≥90Ra	≥80Ra, ≥90Ra	≥80Ra, ≥90Ra
UGR	Contact Office	Contact Office	Contact Office
Lens(es)	<u>Frosted</u> , striped, clear	<u>Frosted</u> , striped, clear	<u>Frosted</u> , striped, clear
Symmetric Distribution	120°	120°	120°
Asymmetric Distribution / IESNA	Symmetric Only	Symmetric Only	Symmetric Only
Ingress Rating	IP65	IP65	IP65
Impact Resistance	IK08	IK08	IK08
Ambient Usage Tolerance	-20°C to 40°C	-20°C to 40°C	-20°C to 40°C
Ambient Storage Tolerance	-40°C to 80°C	-40°C to 80°C	-40°C to 80°C
Ambient Humidity Tolerance	10% to 80% RH	10% to 80% RH	10% to 80% RH
PSU Manufacturer	Lifud	Lifud	Lifud
PSU Advanced Data	Contact Office	Contact Office	Contact Office
Input Voltage	220-240VAC	220-240VAC	220-240VAC
Input Frequency	50-60Hz	50-60Hz	50-60Hz
Power Factor	≥0.9	≥0.9	≥0.9
THD	≤20%	≤20%	≤20%
Product Dimensions (LxWxH)	1500 x 83 x 55mm	1500 x 83 x 55mm	1500 x 83 x 55mm
Cable Dimensions (L)	Terminal Block	Terminal Block	Terminal Block
Fixture Weight	2.42kg	2.42kg	2.42kg
Fixture Primary Materials (s)	Aluminium	Aluminium	Aluminium
Fixture Finish	Anodised	Anodised	Anodised
Lens(es) Materials	Polycarbonate	Polycarbonate	Polycarbonate
Product Warranty	5 Years	5 Years	5 Years